

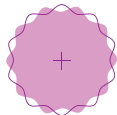


*Waterwise  
Landscape Design  
"Kid Friendly Back Yard"*

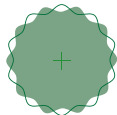
# Trees/Shrubs



**Eastern Redbud**  
*Cercis canadensis*



**London Plane Tree**  
*Platanus acerifolia*



**Dwarf Nectarine**  
*Prunus persica*  
'Mericrest'



**Contorted Filbert**  
*Corylus avellana*  
'Contorta'



**Oregon Grape**  
*Mahonia repens*



**Clematis**  
*Clematis patens*  
'The President'



# Grass/Perennials



**Feather Reed Grass**  
*Calamagrostis x acutiflora*  
'Karl Foerster'



**Chocolate Flower**  
*Berlandiera lyrata*



**Silver Sage**  
*Salvia argentea*



**Mexican Hat**  
*Ratibida columnifera*



**Peony**  
*Paeonia lactiflora*  
'Dr. Alexander Fleming'



**Geranium**  
*Geranium san-guineum striatum*

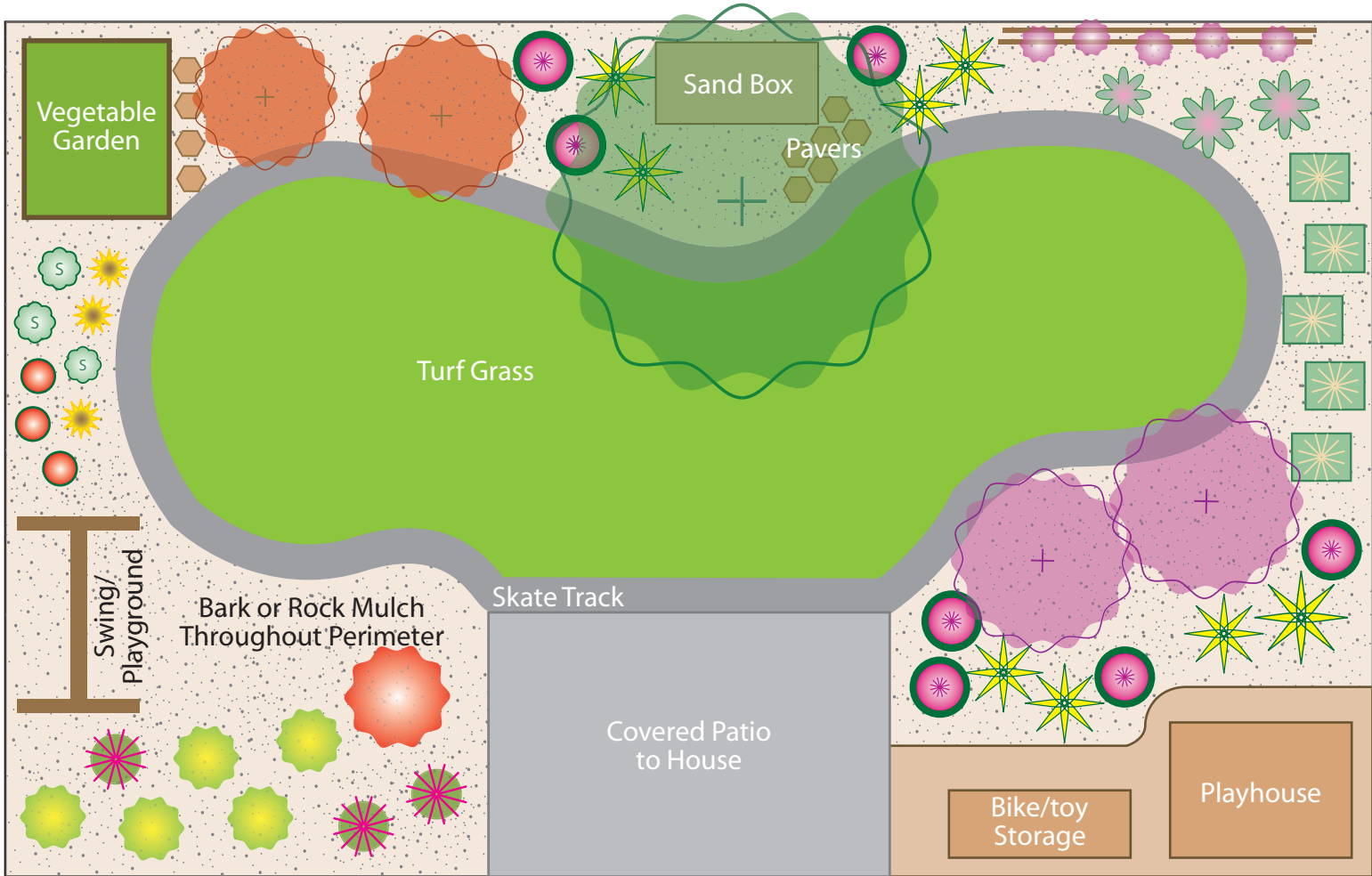


**Lamb's Ear**  
*Stachys byzantina*  
'Silver Carpet'



**Daylily**  
*Hemerocallis*  
'Hyperion'





## On the cover

Springtime in the Conservation Garden Park is conducive to kid play. Bring your children by to experience all the joys of spring, while you learn more about water-wise landscaping.

## Resources

Conservation Garden Park:  
[www.conservationgardenpark.org](http://www.conservationgardenpark.org)

Utah State University Cooperative Extension:  
<http://extension.usu.edu/>

Utah Division of Water Resources:  
[www.conservewater.utah.gov](http://www.conservewater.utah.gov)

Central Utah Water Conservancy District:  
[www.cuwcd.org](http://www.cuwcd.org)

*Please remember to check your local planning and zoning ordinances before proceeding with a water-wise landscape.*



## “Kid-Friendly Back Yard” Landscape Design: #5 in a series of sample landscape designs

Got young children? If you do, then you know how important it is to provide a place for them to play, release energy, and express creativity. Why not start with your own back yard?

This sample landscape design, created by parents of small children, combines many elements of a safe, kid-friendly wonderland with all the principles of a water-wise landscape. Children will enjoy the large climbing tree (London Plane Tree), concrete track for skating and biking,

open lawn area, sand box, vegetable garden, playhouse, swing or playground area, and plants with interesting characteristics. The water-wise plants in the design are chosen for their colorful blooms, tasty fruit, interesting smells, fun textures, or weird growth habits; and grouped generally according to their water requirement. Homeowners are encouraged to incorporate many of these ideas in their own yards for functionality, water conservation, and beauty in all the seasons.

### Match the plant to its characteristics:

London Plane Tree  
Fruit tree varieties  
Eastern Redbud  
Clematis varieties  
Contorted Filbert  
Oregon Grape  
Feather Reed Grass  
Lamb’s Ear  
Chocolate Flower  
Mexican Hat  
Silver Sage  
Peony varieties  
Daylily varieties  
Geranium varieties

Large, fuzzy gray leaves; tall white blooms in spring  
Bright yellow blooms, purple fruit, leaves turn to burgundy  
Serpentine branching habit  
Classic perennial flower, usually yellow or orange  
Perennial with oddly-shaped leaves and pink/blue flowers  
Seedheads turn to golden color late in season  
Climbing vine with large bright blooms  
Velvety-soft leaf texture  
Flower resembles a tall hat  
Tree with bright pink spring blossoms  
Large sturdy branches, unusual bark patterns  
Flowers smell like cocoa  
Tasty fruit  
Large, ultra-bright rose-like flowers

The Conservation Garden Park is located at 8215 South 1300 West in West Jordan. Visit [www.ConservationGardenPark.org](http://www.ConservationGardenPark.org) for details.



JORDAN VALLEY WATER  
CONSERVANCY DISTRICT