



Water-wise
Landscape Design
"Entertaining & Hardscape"

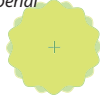
Trees/Shrubs



Dwarf Serviceberry
Amelanchier alnifolia
var. *pumila*



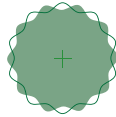
Imperial Honeylocust
(fall foliage)
Gleditsia triacanthos
'Imperial'



Serbian Spruce
Picea omorika



Bigtooth Maple
Acer grandidentatum



Alpine Currant
Ribes alpinum
'Green Mound'



Wisteria
Wisteria sinensis



Gro-Low Sumac
Rhus aromatica
'Gro-Low'



Snowberry
Symphoricarpos
albus



Grass/Perennials



Feather Reed Grass
Calamagrostis x acutiflora
'Overdam'



Maximillian Sunflower
Helianthus maximiliani
'Santa Fe'



Hops
Humulus lupulus



Sun Rose mix
Helianthemum
nummularium



Prairie Winecup
Callirhoe involucrata



Turkish Speedwell
Veronica
liwanensis

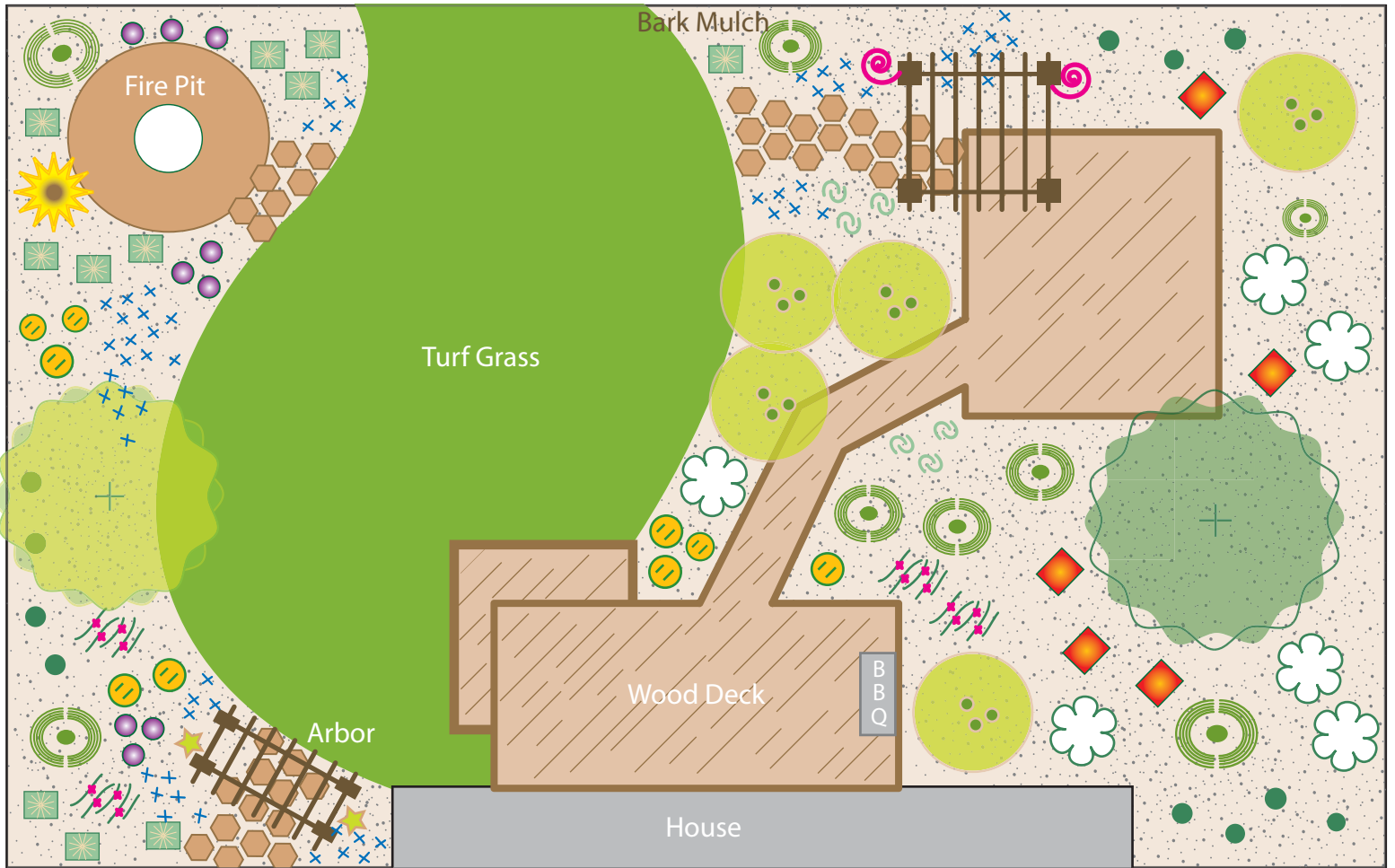


Lenten Rose
Helleborus
orientalis



Rondo Mix Penstemon
Penstemon barbatus
var. *praecox* f. *nanus*
'Rondo'





Fire Pit

Bark Mulch

Turf Grass

Wood Deck

BBQ

Arbor

House

On the cover

A beautiful, water-wise landscape can be both inviting and functional. With added hardscape, you now have a place to entertain your family and friends. Visit the Conservation Garden Park to see various ideas for using hardscape.

Resources

Conservation Garden Park at Jordan Valley
www.conservationgardenpark.org

Utah State University Cooperative Extension
<http://extension.usu.edu/>

Utah Division of Water Resources
www.conservewater.utah.gov

Central Utah Water Conservancy District
www.cuwcd.org

Southern Nevada Water Authority
www.snwa.com

Denver Water
www.denverwater.org

Association of Professional Landscape Designers
www.apld.org

Please remember to check your local planning and zoning ordinances before proceeding with a water-wise landscape.



“Entertaining & Hardscape” Landscape Design: #6 in a series of sample landscape designs

This sample water-wise back yard landscape design provides a series of desirable settings for people to gather and converse. A wood deck, including a barbeque grill, extends from the home. From there, a boardwalk leads out to a free-standing wood deck with a wisteria vine-covered arbor over one corner. In another corner of the yard is a fire pit where people can sit and talk comfortably. An arbor covered with hops vine near the corner of the home provides

yet another area of interest. At maturity, this back yard will have a secluded woodland feel to it, and still require far less water than a traditional all-grass back yard. However, some open space was preserved with a lawn area extending from the deck to the back fence. This can be used for games or larger gatherings. The overall intended result is a setting where people can enjoy themselves while mingling and circulating around various parts of the yard.

Using Hardscape in Your Landscape

“Hardscape” refers to non-living elements of the landscape such as boulders, brick pavers, curbing, pathways, retaining walls and decks. Combined with a rich assortment of plant material, hardscape elements can really contribute to the aesthetic and functional quality of a landscape. Best of all, hardscaping requires no water and usually very little maintenance. Hardscapes in this sample design include arbor structures, wood decks, stone pathways, and a stone fire pit.

The Conservation Garden Park is located at 8215 South 1300 West in West Jordan. Visit www.conservationgardenpark.org for details.



JORDAN VALLEY WATER
CONSERVANCY DISTRICT