



*Conservation  
Garden Park*

Water-wise  
Landscape Design  
"Utah Natives"

# Trees/Shrubs



Pinyon Pine  
*Pinus edulis*



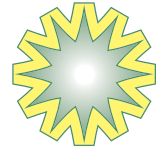
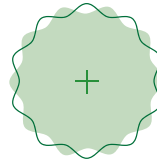
Mountain Mahogany  
(curl-leaf)  
*Cercocarpus ledifolius*



Bigtooth Maple  
*Acer grandidentatum*



Golden Currant  
*Ribes aureum*



# Shrubs/Perennials



Harriman's Yucca  
*Yucca harrimanii*



Apache Plume  
*Fallugia paradoxa*



Dorr Sage  
*Salvia dorrii*



Desert Four O'clock  
*Mirabilis multiflora*



# Groundcovers/Perennials



Hummingbird Flower  
*Zauschneria latifolia*



Evening Primrose  
(tufted)  
*Oenothera caespitosa*

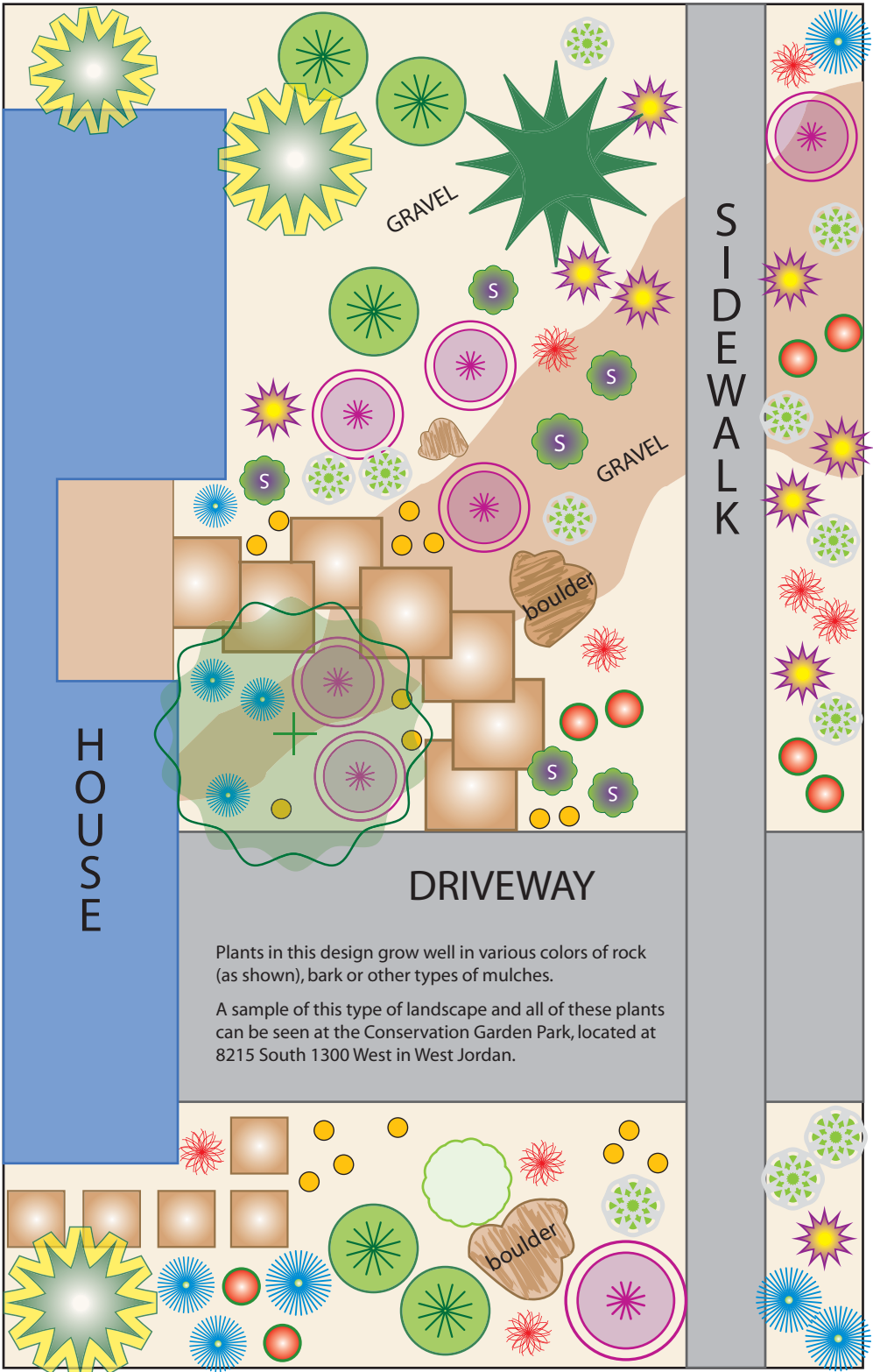


Sundancer Daisy  
*Tetranneuris acaulis*



Rocky Mtn and Firecracker Penstemons  
*Penstemon strictus*/  
*Penstemon eatonii*





H  
O  
U  
S  
E

GRAVEL

GRAVEL

boulder

DRIVEWAY

S  
I  
D  
E  
W  
A  
L  
K

Plants in this design grow well in various colors of rock (as shown), bark or other types of mulches.

A sample of this type of landscape and all of these plants can be seen at the Conservation Garden Park, located at 8215 South 1300 West in West Jordan.

boulder

## Utah Native Landscape Design - #2 in a series of sample landscape designs

Choosing plants for your landscape can be quite a challenge. Most nurseries offer a wide variety of plants to be grown in many different conditions. How do you know which will grow well in your own yard? Using plants native to the region is a good start to your landscape design. Native plants are already adapted to the temperature extremes, irregular rainfall, and soil conditions of the climate.

Certain native plants have been propagated and marketed by the Intermountain Native Plant

Growers Association, which are available at participating nurseries and labeled "Utah's Choice." Look for the "Utah's Choice" tag on plants for sale throughout the Salt Lake area. These native plants, as well as other climate-adapted plants, will typically require less watering, fertilizing, and pruning than many traditional landscape plants.

For more information on native plants, including a plant list and participating "Utah's Choice" nurseries, visit [www.utahschoice.org](http://www.utahschoice.org).



### Utah Natives

At left is the High Mountain Desert Landscape in the Conservation Garden Park, which has many Utah natives.

### On the cover

Sundancer Daisy (*Tetranneuris acaulis*) is a clump-forming perennial with thin thread-like leaves. Lots of bright yellow daisy-like flowers bloom from late-spring until autumn on long stems. This plant grows best in arid regions and prefers lean, well-drained soils.

## Some favorite Utah native plants for the landscape:

### Grasses

Alkali Sacaton Grass  
Blue Grama Grass  
Great Basin Wildrye  
Indian Rice Grass  
Little Bluestem

### Trees

Bigtooth Maple  
White Fir  
Gambel Oak  
Curl-leaf Mountain Mahogany  
Pinyon Pine

### Shrubs

Shadscale  
Dorr Sage  
Harriman's Yucca  
Cliffrose  
Apache Plume  
Oakleaf Sumac  
Utah Serviceberry  
Mormon Tea  
Littleleaf Mockorange  
Mountain Big Sagebrush  
Creeping Oregon Grape  
Golden Currant  
Fernbush

### Perennials

Desert Four O'Clock  
Greenstem Paperflower  
Gooseberryleaf Globemallow  
Hummingbird Flower  
Indian Paintbrush  
Little Beebalm  
Penstemon varieties  
Showy Sandwort  
Silver Sage  
Sticky Geranium  
Sulfur-flower Buckwheat  
Sundancer Daisy  
Tufted Evening Primrose  
Utah Ladyfinger  
Utah Sweetvetch



8215 South 1300 West,  
[www.ConservationGardenPark.org](http://www.ConservationGardenPark.org)  
1-877-728-3420